

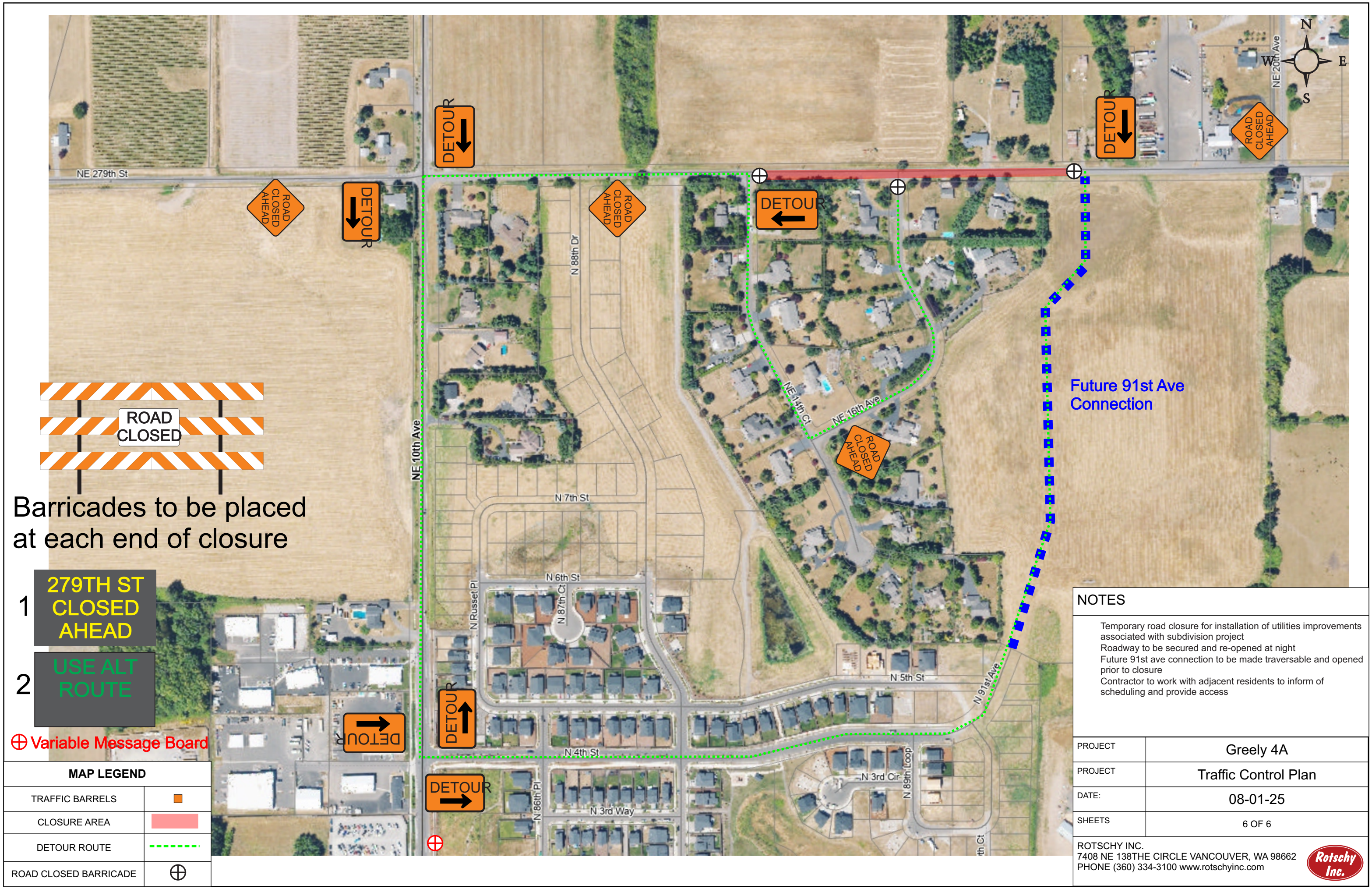
Barricades to be placed at each end of closure

- 1 279TH ST CLOSED AHEAD
- 2 USE ALT ROUTE

⊕ Variable Message Board

MAP LEGEND	
TRAFFIC BARRELS	■
CLOSURE AREA	■
DETOUR ROUTE	---
ROAD CLOSED BARRICADE	⊕





NOTES	
Temporary road closure for installation of utilities improvements associated with subdivision project Roadway to be secured and re-opened at night Future 91st ave connection to be made traversable and opened prior to closure Contractor to work with adjacent residents to inform of scheduling and provide access	
PROJECT	Greely 4A
PROJECT	Traffic Control Plan
DATE:	08-01-25
SHEETS	5 OF 6
ROTSCHY INC. 7408 NE 138TH AVE VANCOUVER, WA 98662 PHONE (360) 334-3100 www.rotschyinc.com	




Barricades to be placed
at each end of closure

- 1 279TH ST
CLOSED
AHEAD
- 2 USE ALT
ROUTE

⊕ Variable Message Board

MAP LEGEND	
TRAFFIC BARRELS	
CLOSURE AREA	
DETOUR ROUTE	
ROAD CLOSED BARRICADE	

NOTES	
Temporary road closure for installation of utilities improvements associated with subdivision project Roadway to be secured and re-opened at night Future 91st ave connection to be made traversable and opened prior to closure Contractor to work with adjacent residents to inform of scheduling and provide access	
PROJECT	Greely 4A
PROJECT	Traffic Control Plan
DATE:	08-01-25
SHEETS	6 OF 6
ROTSCHY INC. 7408 NE 138TH AVE VANCOUVER, WA 98662 PHONE (360) 334-3100 www.rotschyinc.com	
